



Flat 4, Hadleigh Court Shady Bower, Salisbury, Wiltshire, SP1 2RJ

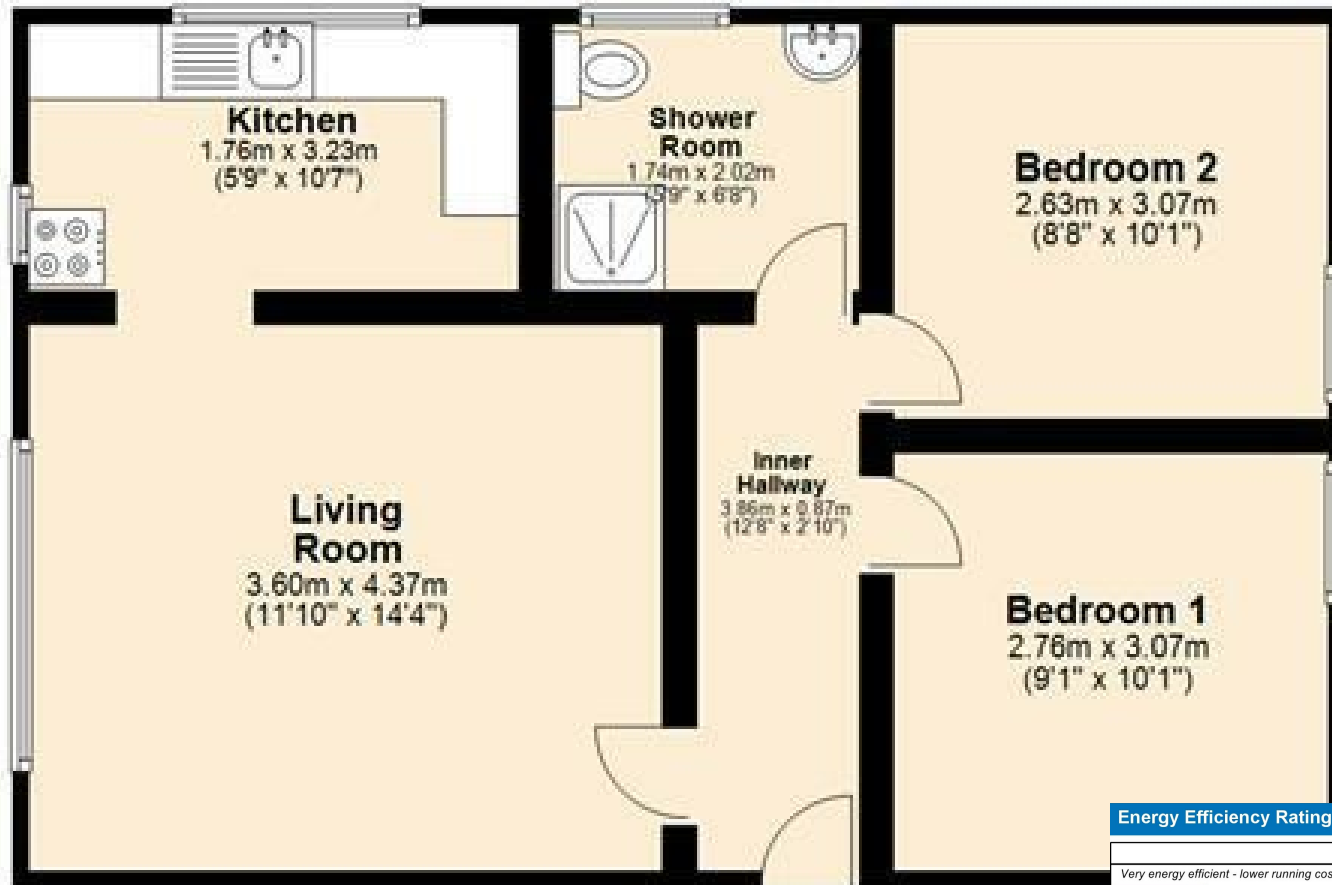
£875 Per Calendar Month

**description**

A first floor two bedroom flat located in shady bower. The property has been re-decorated and re-carpeted through and comprises of; Lounge/dining room leading with door leading to kitchen, fitted kitchen with freestanding electric hob/cooker, fridge freezer and plumbing for washing machine. There are two double bedrooms. Bathroom with stand alone shower, WC, basin. Access to communal grass area at the rear of the building. UNFURNISHED, electric heating.

# Ground Floor

Approx. 49.1 sq. metres (528.4 sq. feet)



Total area: approx. 49.1 sq. metres (528.4 sq. feet)

Energy Efficiency Rating		Current	Potential
Very energy efficient - lower running costs			
(92 plus) <b>A</b>			
(81-91) <b>B</b>			
(69-80) <b>C</b>			
(55-68) <b>D</b>			
(39-54) <b>E</b>			
(21-38) <b>F</b>			
(1-20) <b>G</b>			
Not energy efficient - higher running costs			
		66	77
England & Wales		EU Directive 2002/91/EC	

**WHITES**  
 Castle Chambers, 47 Castle Street,  
 Salisbury, Wiltshire, SP1 3SP  
 01722 336422  
[www.hwwhite.co.uk](http://www.hwwhite.co.uk)  
[residential-sales@hwwhite.co.uk](mailto:residential-sales@hwwhite.co.uk)

